

MALTA BEND COMMUNITY LAKE

24.6 acres Saline Co. DeLorme 29, G-6
MDC owned; for information call 573-815-7900
GPS: 39.1746327,-93.3853596

Directions: From Malta Bend, go west on US 65 about 1 mile and turn south onto Hwy. 127. The sign for the lake is about 1.25 miles; turn left.

This is a small area, easily reached and worth a quick check en route to/from the more renowned sites in the vicinity.

When to Visit/Species to Expect: Only spring and summer birding trips comprise the checklist as of spring 2015. The expected species are found here, but waterfowl are not represented on the list. Dark-eyed Juncos, Fox, Song, and White-throated Sparrows were found on a March trip. It's good woodpecker habitat; 3 Yellow-bellied Sapsuckers were there in mid-June. Eastern Kingbirds were staging for migration in late August.

Features of interest to birders: A narrow strip of brushy habitat along the entrance road is part of the area. Bushes and shrubs near the single parking lot may host towhees, chats or catbirds. There is a fisherman path along west side to use to get views of the far end of the lake. A walk across the low earthen dam gets one close to birds skulking on the far side of the 5-acre lake. The remaining acres are old field (6 acres), and forest and woodland (13 acres).

Toilet: None.

Camping: No facilities.

Hazards/Limitations: None noted.

Nearby Birding Sites: Grand Pass CA, Van Meter SP, Baltimore Bend CA, Blind Pony CA.

MALTA BEND COMMUNITY LAKE

SALINE COUNTY
25 ACRES

SCALE



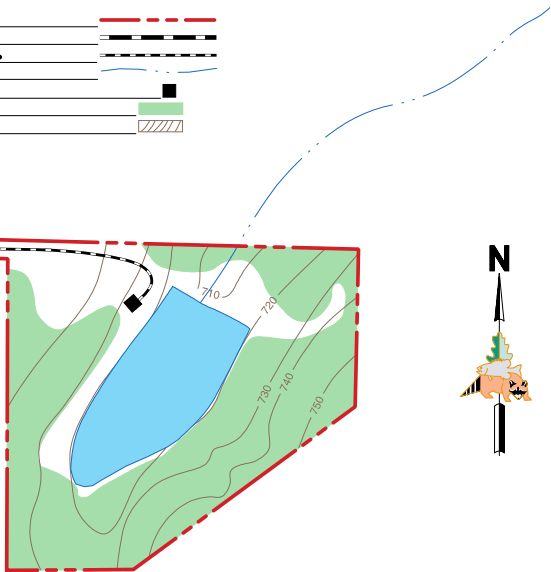
LEGEND

- Boundary
- Paved Road
- Gravel Road
- Drainage
- Parking Lot
- Forest
- Topography

To Hwy. 65
2 Miles

127

To Hwy. 20
5 Miles



VICINITY MAP

